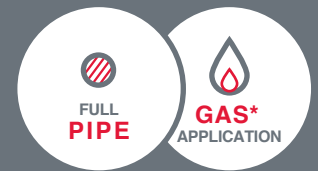


# SE 1899



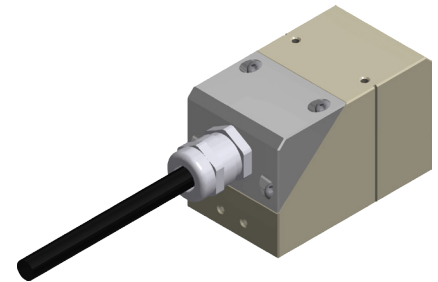
## High performance



MEASURED  
MEDIA  
LIQUIDS &  
GASES\*



PIPE DIAMETER  
FROM DN100  
UPTO DN7500  
EXTENDED APP. UP TO 10000mm



### SALES DESCRIPTION

#### INSTALLATION

- Clamp-on probes for full pipes flow measurement
- Micro structure sensor for difficult applications.
- Mounting on pipe from DN100 to DN7500 (Extended application: 10000 mm)
- Maximum operating temperature 110°C
- Connection : through sealed cable gland

#### APPLICATION

Non intrusive

#### CONDITIONS OF USE

Full pipe

#### \* GAS APPLICATION

Difficult-Clear or charged liquids - clean or dirty pipes

#### PIPE DIAMETER

Ask Ultraflux for application conditions compatibility

#### PIPE THICKNESS

Standard application : 100-7500mm

Extended application : Up to 10000 mm - Please consult us

#### CONNECTIC

> 1 mm

#### MOUNTING TYPE

Cable gland

#### TEMPERATURE

/, V, N, W

#### MOUNTING BRACKETS

From -20°C to +110°C

#### COMPATIBLE CONVERTERS

SU-1625, SU-1629, SU-1516, SU-1735

#### KIT AVAILABILITY

All

#### ATEX CERTIFICATION

Yes (with push/pull connection for portable use)

#### INGRESS PROTECTION

Possible (specific version)

#### PROBE MATERIAL

EN/IEC 60529 IP68

#### OVERALL DIMENSIONS

PEEK

#### OVERALL WEIGHT

67,5 x 40 x 44 mm

#### SENSOR FREQUENCY

200g

500 kHz

NON-CONTRACTUAL DOCUMENT

**Ultraflux**  
Débitmètres à ultrasons

Une marque de  **FAURE HERMAN**