

SE 1815

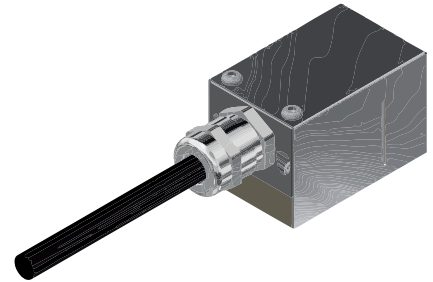
Standard
ATEX



MEDIA
MEASURED
LIQUIDS



PIPE DIAMETER
FROM DN 40
UP TO DN 1000



SALES DESCRIPTION

- External probes for liquid flow measurement on a full pipe
- Mounting on a pipe from DN40 up to DN1000
- Maximum operating temperature of 79°C
- Potted cable through cable gland
- ATEX application

INSTALLATION

Non intrusive

APPLICATION

Full pipe

CONDITIONS OF USE

Standard conditions (clear liquids & clean pipes)

DIAMETER OF THE PIPE

40 - 1000 mm

THICKNESS OF THE PIPE

>0,4 mm

CONNECTIC

Potted cable through cable gland

MOUNTING TYPE

I, V, N, W

TEMPERATURE

From -20°C to +79°C

COMPATIBLE CONVERTERS

ALL

ATEX CERTIFICATION

YES - Encapsulation protection

INGRESS PROTECTION

EN/IEC 60529IP68

SUPPORT TYPE

Single or dual mounting bracket as an option

MATERIAL OF THE PROBES

Peek + Stainless Steel

MATERIAL OF THE SUPPORT

Stainless Steel 304: SU1517 & SU1520

OVERALL SIZE (support & probes)

47x30x32mm (1x stand-alone probe)

OVERALL WEIGHT (support & probes)

70g (1x stand-alone probe)

SENSOR FREQUENCY

1MHz