

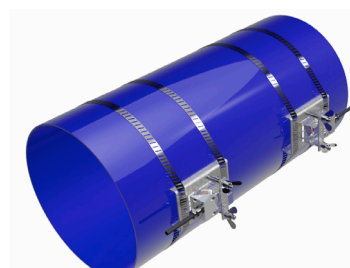
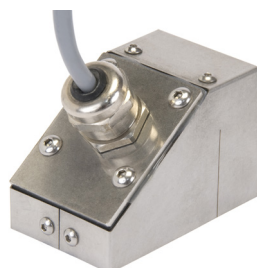
SE1599_0500PEH_68



MEDIA
MEASURED
LIQUIDS



PIPE DIAMETER
FROM DN 100
TO DN 10 000



SALES DESCRIPTION

- External probes for liquid flow measurement on a full pipe
- Microstructure - for difficult applications
- Charged liquids and old/dirty pipes
- Mounting on a pipe from DN100 to DN10 000
- Maximum operating temperature of 120°C
- Gland connector

INSTALLATION

Non intrusive

APPLICATION

Full pipe

CONDITIONS OF USE

Difficult - Charged liquids and old/dirty pipes

DIAMETER OF THE PIPE

Recommended probe range: 100 - 7500 mm
Extended probe range: 80 - 10 000 mm (requires an 8XX converter)

THICKNESS OF THE PIPE

> 1 mm

CONNECTIC

Gland Connector

MOUNTING TYPE

/, V, N, W

TEMPERATURE

From -20°C to +120°C

LIST OF ADAPTABLE SUPPORTS

SU1625, SU1629, SU1516, SU1735

COMPATIBLE CONVERTERS

ALL

AVAILABLE KIT

NO

ATEX CERTIFICATION

NO

INGRESS PROTECTION

EN/IEC 60529 IP68

PROBE MATERIAL

Rexolite + Stainless Steel

OVERALL SIZE

70 x 40 x 44 mm

OVERALL WEIGHT

175 g

SENSOR FREQUENCY

500 kHz

NON CONTRACTUAL DOCUMENT